



UNI-HYDRO™

2021 IRONWORKERS | PLATE SHEARS



DESIGNED BY JIM DICKER
Manufactured By
Uni-Hydro, Inc.
MODEL: 300-20
SERIAL: 2501700
CORPORATE HEADQUARTERS

SHIELD MUST
BE DOWN WHEN
NOT IN USE

WARNING
NEVER - Place your hands or any part of
your body under hold down or
shear knives.
NEVER - Operate this shear with guards
removed.
NEVER - Attempt to service while motor
is running.
NEVER - Operate without safety glasses.
STAND CLEAR OF
REAR OF MACHINE

CAUTION
MILD STEEL ONLY
DO NOT CUT STEEL WITH BAR HOLDER OFF

MADE IN THE USA SINCE 1974

EST.



1974

TM



UNI-HYDRO

For over 45 years Uni-Hydro has built the finest line of ironworkers, plate shears and punch tooling in the fabrication industry. All Uni-Hydro machines feature our patented linkage system and are engineered for exceptional performance and longevity. The result is each ironworker does exactly what an ironworker is supposed to do; cut, bend, notch and punch steel with the least amount of deformation possible.

Some people call us the best kept secret in the Machine Tool Industry. We hope you enjoy exploring our machines and decide to put a legendary Uni-Hydro on your shop floor soon!

FOR MACHINERY & TOOLING INQUIRIES CALL OUR SALES TEAM AT

[800] 328-0036



WHY INVEST IN A UNI-HYDRO?

1

WE HAVE A LONG HISTORY BUILDING IRONWORKERS IN AMERICA

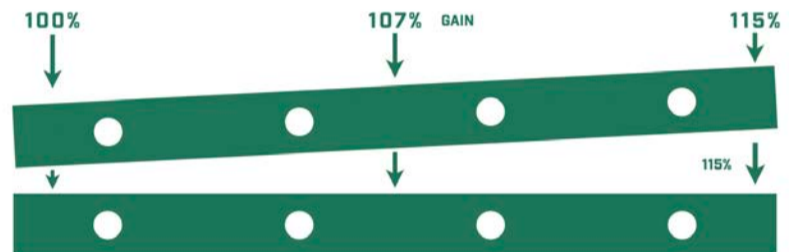
The Dvorak family has been producing hydraulic ironworkers since 1949, with the Uni-Hydro brand in business for over 45 years. Jim Dvorak holds 30 international and 6 stateside patents on ironworkers, with no other ironworker manufacturer or individual coming close to as many patents held by Jim.

2

PATENTED POWER

The patented mechanical linkage system designed by Jim Dvorak moves the working center plate downward with a slight movement which breaks the molecules of steel in multiple directions in a slicing motion. This ensures the cleanest cuts available in the industry. The design methods found on a Uni-Hydro ironworker have incorporated the tooling stations to push in a non-attached or non-binding method. This ensures our punch stations and power cavity stations operate tooling in a vertical position.

**UNI-HYDRO SHEARS
GAIN POWER UP TO 115%
THROUGH THE CUT!**



3

ENGINEERED FOR A TIGHT FIT AND FINISH

Our rigorous manufacturing process ensures the primary plates are 100% accurate. Each machine has almost 70% more load bearing pin surface than a competitor's machine. This creates a more efficient working cycle throughout the machine's working process. Coupled with this is our world famous mechanical linkage system, that ensures each guillotine cut on our bar shear is as accurate as is possible.

4

EXCEPTIONAL PUNCHES AND TOOLING

Our tooling doesn't wear out like other machines. Our four-side bar shear blades come with an unconditional 3-Year warranty on the original edge. No other manufacturer offers this guarantee. Our punches and dies are purchased in pairs of the exact same size, not mismatched like the rest of the industry. Each punch and die is coated with oil with a next-level bluing process to prevent oxidation and reduce slag build up. With our punches and dies sitting on the shelf and not rusting you are ensured of getting the best punches & dies for your money.

5

DESIGNED WITH YOUR SAFETY IN MIND

Uni-Hydro machines are designed for safety of an operator, with shields and pedals in exactly the right place. Uni-Hydro Inc is an American based manufacturing company that **protects our company AND customers** with appropriate product Liability Insurance. Even UNI-HYDRO MANUFACTURED Punches, Dies and Tooling are covered by Uni-Hydro's Product Liability Certification when used in a Uni-Hydro ironworker. With Foreign importers depending on liability pass-through to off-shore manufacturers, who do trust more with your valuable purchase dollars?



AMERICA'S IRONWORKERS

TOP PERFORMING IRONWORKERS AT A GREAT PRICE
3-STATION & "SIX-SHOOTER" TURRET MODELS



* Shown with optional Universal Sever Housing

The Uni-Hydro Model 30-8 ironworker is the most powerful 30 ton on the market, with 70% more load bearing pin surface than a scissors manufacturer's 150 ton. This model is perfect for small shops, providing a little extra tonnage for your projects than the typical 25 ton machines at this price range.

FEATURES:

- 4-1/2" Open throat punch with 30 ton capacity
- Optional Angle Shear Capacity is 3" x 3" x 1/4"
- 8" Bar shear with 4 sided bar blades
- Power cavity accommodates various tooling
- Fixed or adjustable bar shear hold-down
- Forklift accommodations
- Magnetic starter for safety and reliability
- Sits flush with wall freeing up floor space
- Rated for 65,000 PSI Tensile Mild Steel

SPECIFICATIONS

Model	30-8
Tonnage	30
Throat Depth	4-1/2"
Punch	3/4" hole in 1/2" mild steel 1-1/4" hole in 5/16" mild steel
Bar Shear	1/4" x 8", 1/2" x 6"
Angle Shear 90°	Sever Cut - 3" x 3" x 1/4"
Miter Angle 45°	Bar Shear - 2" x 2" standard
Channel Shear	1" x 2" standard
Rod Shear	Round (Max) - 5/8" Square (Max) - 5/8"
V Coper Notcher 90°	For 3" x 3" x 1/4" Angle Iron

Why Buy A Used Ironworker At This Price?

Square Notcher	1-3/4" x 2" x 1/4" - (Punch Station Only)
Pipe Notcher (Sch 40 or 80)	1/2", 3/4", 1", 1-1/4", 1-1/2", 1-3/4", 2"
Brake	6" x 1/4"
Strokes Per Min	Light Material - 9 at Max Capacity - 9
Hydraulics	1,000 psi
Oil Capacity	15 quarts
Motor	Standard - 3 HP / 3ph Optional - 3 HP / 1ph
Dimensions (L x W x H)	27" x 24" x 50"
Weight	880 lbs
TOOLING AND ACCESSORIES - PAGE 18 & 19	





40 TON TURRET

MODEL T40-14 IRONWORKER



* Shown with optional Steel Bin Catcher & Punch & Die Rack

The Uni-Hydro Model T40-14 is a six punch station Turret Ironworker that has a 5.25" throat depth with a quick release handle to disengage from the punch plungers for easy rotation of the turret mechanism to spin the turret. Uni-Hydro's NEW design of the Turret is superior in strength and stability.

FEATURES:

- Revolving turret with 6 punching stations
- Punch up to six sizes or shapes within seconds
- 14" bar shear with 4-sided blades can miter angle iron to 2" x 2" x 5/16" or 3" x 3" x 3/8"
- Bar shear hold-down can be fixed or adjustable
- Variable stroke control
- Built for forklift handling
- Manual Punch Aligner

SPECIFICATIONS

Model	T40-14
Tonnage	40
Throat Depth	5-1/4"
Punch	1" hole in 1/2" mild steel 1-3/8" hole in 3/8" mild steel
Bar Shear	3/8" x 14", 1/2" x 10", 5/8" x 6"
Angle Shear 90°	Slug Type - 3" x 3" x 3/8" Sever Cut - 3" x 3" x 1/4"
Miter Angle 45°	Bar Shear - 3" x 3" x 3/8" Slug Type - 2" x 2" x 5/16"
Rod Shear	Round (Max) - 3/4" Square (Max) - 3/4"
V Coper Notcher 90°	For 3" x 3" x 1/4" Angle Iron
Square Notcher	1-3/4" x 2" x 1/4" - (Punch/Power Cavity)

Pipe Notcher (Sch 40 or 80)	1/2", 3/4", 1", 1-1/4", 1-1/2", 1-3/4", 2"
Brake	6" or 9" x 1/4"
Channel Shear	1" & 2" combined or 3" standard
Strokes Per Min	Light Material - 50 Max Capacity - 7
Hydraulics	1,000 psi
Oil Capacity	15 quarts
Motor	Standard - 3 HP / 3ph Optional - 3 HP / 1ph
Dimensions (L x W x H)	34" x 28" x 60"
Weight	1,710 lbs
TOOLING AND ACCESSORIES - PAGE 18 & 19	





* Shown with optional Slug Type Angle Shear

Uni-Hydro's Model 45-14 is a rugged and compact three station ironworker that has been the signature machine for our company since 1980. Today, it's still the industry's leader in capacity, quality of cuts, power, versatility and affordability. This Model enhances all the Uni-Hydro Ironworkers in giving a customer more tonnage and capacity for the dollar.

FEATURES:

- Manual punch aligner
- 6" open throat punch with 45-ton capacity
- 14" bar shear with 4-sided blades
- Bar shear hold-down can be fixed or adjustable
- Variable stroke control
- Built for forklift handling
- Magnetic starter for safety and reliability
- 3-Year 1 year unconditional warranty on the original edge of the flat bar shear blade

SPECIFICATIONS

Model	45-14
Tonnage	45
Throat Depth	6"
Punch	1-1/8" hole in 1/2" mild steel 1-3/8" hole in 3/8" mild steel
Bar Shear	3/8" x 14", 1/2" x 10", 5/8" x 6"
Angle Shear 90°	Slug Type - 3" x 3" x 3/8" Sever Cut - 3" x 3" x 1/4"
Miter Angle 45°	Bar Shear - 3" x 3" x 3/8" Slug Type - 2" x 2" x 5/16"
Rod Shear	Round (Max) - 3/4" Square (Max) - 3/4"
V Coper Notcher 90°	For 3" x 3" x 1/4" Angle Iron
Square Notcher	1-3/4" x 2" x 1/4" - (Punch/Power Cavity)

Pipe Notcher (Sch 40 or 80)	1/2", 3/4", 1", 1-1/4", 1-1/2", 1-3/4", 2"
Brake	6" or 9" x 1/4"
Channel Shear	1" & 2" combined or 3" standard
Strokes Per Min	Light Material - 50 Max Capacity - 7
Hydraulics	1,000 psi
Oil Capacity	15 quarts
Motor	Standard - 3 HP / 3ph Optional - 3 HP / 1ph
Dimensions (L x W x H)	34" x 28" x 60"
Weight	1,240 lbs
TOOLING AND ACCESSORIES - PAGE 18 & 19	





* Shown with optional Universal Sever Housing

Uni-Hydro's Model 56-14 is an impressive ironworker that's the larger twin of our Model 45-14. For those extra stainless steel or high tensile steel jobs, this 3 station machine allows a user the choice not to be undersold or over-sold to fit your fabrication needs.

FEATURES:

- Manual Punch Aligner
- 6" Open Throat Punch with 56-ton capability
- 14" Bar Shear with Four Sided Blades
- Bar Shear Hold-Down can be Fixed or Adjustable
- Full Up & Down Stroke Control
- Built for Forklift Handling
- Magnetic Starter for Safety & Reliability
- 1 Phase or 3 Phase Motor

SPECIFICATIONS

Model	56-14
Tonnage	56
Throat Depth	6"
Punch	1-1/4" hole in 1/2" mild steel 13/16" hole in 3/4" mild steel
Bar Shear	3/8" x 14", 1/2" x 10", 5/8" x 8", 3/4" x 6"
Angle Shear 90°	Slug Type - 3" x 3" x 3/8" Sever Cut - 4" x 4" x 3/8"
Miter Angle 45°	Bar Shear - 3" x 3" x 3/8" Slug Type - 2" x 2" x 5/16"
Rod Shear	Round (Max) - 1-1/16" Square (Max) - 1-1/16"
V Coper Notcher 90°	For 3" x 3" x 1/4" Angle Iron
Square Notcher	1-3/4" x 2" x 1/4" - (Punch/Power Cavity)

Pipe Notcher (Sch 40 or 80)	1/2", 3/4", 1", 1-1/4", 1-1/2", 1-3/4", 2"
Brake	6" or 9" x 1/4"
Channel Shear	2" & 3" combined or 4" standard
Strokes Per Min	Light Material - 50 Max Capacity - 7
Hydraulics	1,200 psi
Oil Capacity	20 quarts
Motor	Standard - 5 HP / 220v / 3ph Optional - 5 HP / 1ph
Dimensions (L x W x H)	33" x 27.25" x 57"
Weight	1,330 lbs
TOOLING AND ACCESSORIES - PAGE 18 & 19	





56 TON (5624)

MODEL 5624 IRONWORKER



* Shown with optional Slug Type Angle Shear

In building the 5624 Chuck Dvorak took up his own challenge to design a 1/2" x 24" flat bar shear that could achieve virtually perfect shearing, with a blade rake as close to zero degrees as possible. The result was the **Uni-Hydro Model 5624**, featuring a **2 degree low rake blade** and the highest quality shear for any hydraulic ironworker that has ever been produced. No other hydraulic ironworker can match the 5624's capability of shearing 1/2" x 24" on 2 degrees of rake, with such minimal distortion over 24". This machine will do great in small fab, farm and sheet metal shops.

FEATURES:

- Manual Punch Aligner
- 9" Open Throat Punch with 56-ton capability
- 24" Bar Shear with Four Sided Blades,
- Bar Shear set at 2 degrees of rake
- Bar Shear Hold-Down can be Fixed or Adjustable
- Full Up & Down Stroke Control
- Built for Forklift Handling
- Magnetic Starter for Safety & Reliability
- 1 Phase or 3 Phase Motor

SPECIFICATIONS

Model	5624
Tonnage	56
Throat Depth	9"
Punch	1-3/8" hole in 1/2" mild steel 2-1/4" hole in 5/16" mild steel
Bar Shear	1/2" x 24"
Angle Shear 90°	Slug Type - 6" x 6" x 3/8" Sever Cut - 4" x 4" x 3/8"
Miter Angle 45°	Bar Shear - 4" x 4" x 3/8" Slug Type - 4" x 4" x 3/8"
Rod Shear	Round (Max) - 1-1/4" Square (Max) - 1-1/4"
V Coper Notcher 90°	For 4" x 4" x 3/8" Angle Iron
Square Notcher	3" x 3" x 3/8" - (Punch/Power Cavity)

Pipe Notcher (Sch 40 or 80)	1/2", 3/4", 1", 1-1/4", 1-1/2", 1-3/4", 2"
Brake	6", 9", 14", 18", 24" capacity
Channel Shear	2" & 3" combined or 4" standard
Strokes Per Min	Light Material - 50 Max Capacity - 9
Hydraulics	2,000 psi
Oil Capacity	16 gallons
Motor	Standard - 5 HP / 220v / 3ph Optional - 5 HP / 1ph
Dimensions (L x W x H)	46" x 37" x 70"
Weight	2,700 lbs
TOOLING AND ACCESSORIES - PAGE 18 & 19	





56 TON SUPER TURRET

MODEL ST 56-14 IRONWORKER



* Shown with optional Slug Type Angle Shear

Uni-Hydro's 56 Ton **ST56 Super Turret** is a next level turret style ironworker featuring a 56 ton "Six Shooter". When others are reloading, you are completing the job. Six punch barrels for six independent punches produces quick turnaround. Today, Uni-Hydro is the sole manufacturer of not one, but two six-barrel turrets.

With competition counting each component as a "station", let's settle that score now, this machine would be called a 10 station ironworker. Take a Uni-Hydro PRO 56 and add on a 56 ton turret with a six inch throat under the Single station AND IN THE TURRET. There's a reason one of our slogans is **"Twice The Muscle"**.

FEATURES:

- 6" open throat turret punch with 56 ton capacity
- 6 Station Turret Punch
- Manual Punch Aligner
- 4-way 14" low rake flat bar shear
- Bar shear hold-down can be fixed or adjustable
- Magnetic starter for safety and reliability
- Grease bank allows lubricating without removing machine covers
- Built for forklift handling
- Full stroke control
- Full 4th Notcher Station
- Notcher of choice in 4th Station

SPECIFICATIONS

Model	ST56
Tonnage	56
Throat Depth	6"
Punch	1-1/4" hole in 1/2" mild steel 13/16" hole in 3/4" mild steel
Bar Shear	3/8" x 14", 1/2" x 10", 5/8" x 8", 3/4" x 6"
Angle Shear 90°	Slug Type - 3" x 3" x 3/8" Sever Cut - 4" x 4" x 3/8"
Miter Angle 45°	Bar Shear - 3" x 3" x 3/8" Slug Type - 2" x 2" x 5/16"
Rod Shear	Round (Max) - 1-1/16" Square (Max) - 1-1/16"
V Coper Notcher 90°	For 3" x 3" x 1/4" Angle Iron
Square Notcher	Notcher Station - 2" x 3" x 3/8" Punch/Power Cavity - 1-3/4" x 2" x 1/4"

Pipe Notcher (Sch 40 or 80)	1/2", 3/4", 1", 1-1/4", 1-1/2", 1-3/4", 2"
Brake	6" or 9" x 1/4"
Channel Shear	2" & 3" combined or 4" standard
Strokes Per Min	Light Material - 50 Max Capacity - 7
Hydraulics	1,200 psi
Oil Capacity	20 quarts
Motor	Standard - 5 HP, 220v / 3ph Optional - 5 HP / 1ph
Dimensions (L x W x H)	33" x 27.25" x 57"
Weight	3,375 lbs
TOOLING AND ACCESSORIES - PAGE 18 & 19	





* Shown with optional Slug Type Angle Shear

Uni-Hydro Model 80-24 is an 80 ton ironworker with a 24" bar shear that does the work of our competitor's 90 & 100 ton machines. This burly 3-station ironworker is the definition of value, providing our customers large capacities without a large investment. We built this model with an oversized upper punch system and give you access to the world of 6" x 6" x 1/2" Angle Shearing. The 80-24 is the best heavy-duty punching and shearing ironworker for the money.

FEATURES:

- 80-ton open throat punch
- 24" Bar Shear with Four Sided Blades
- Manual Punch Aligner
- Bar Shear Hold-Down can be Fixed or Adjustable
- Variable stroke control
- Eyelet and forklift accommodations
- Magnetic Starter for Safety & Reliability
- Electric foot control

SPECIFICATIONS

Model	80-24
Tonnage	80
Throat Depth	9"
Punch	2" hole in 1/2", 1-3/8" hole in 3/4" & 2-1/4" hole in 7/16" mild steel
Bar Shear	1/4" x 24" , 1/2" x 20", 3/4" x 10", 1" x 6"
Angle Shear 90°	Slug Type - 6" x 6" x 1/2" Sever Cut - 4" x 4" x 3/8"
Miter Angle 45°	Slug Type - 4" x 4" x 1/2" Sever Cut - 4" x 4" x 3/8"
Rod Shear	Round (Max) - 1-1/4" Square (Max) - 1-1/4"
Coper Notcher 90°	For 4" x 4" x 3/8" Angle Iron
Square Notcher	3" x 3" x 3/8" - (Punch/Power Cavity)

Pipe Notcher (Sch 40 or 80)	1/2", 3/4", 1", 1-1/4", 1-1/2", 1-3/4", 2"
Brake	6", 9", 14", 18", 24" capacity
Channel Shear	2" & 3" combined or 4", 5" 6" standard
Strokes Per Min	Light Material - 50 Max Capacity - 9
Hydraulics	2,000 psi
Oil Capacity	16 gallons
Motor	Standard - 7.5 HP / 220v / 3ph Optional - 7.5 HP / 1ph
Dimensions (L x W x H)	46" x 37" x 70"
Weight	2,900 lbs

TOOLING AND ACCESSORIES - PAGE 18 & 19



CAUTION ⚠

ONLY
ANGLE
/8"
AT BAR
& 3/4"x6"
CAPACITY
E)



PRO SERIES IRONWORKERS

WARNING
NEVER - Place your hands or any part of your body under load when in shear stroke.
NEVER - Operate this shear with guards removed.
NEVER - Attempt to service while motor is running.
NEVER - Operate without safety glasses.
STAND CLEAR OF REAR OF MACHINE

CAUTION ⚠
MILD STEEL ONLY
DO NOT CUT STEEL WITH BAR HOLDER OFF

THE ULTIMATE IRONWORKERS FOR PRODUCTIVITY
4-STATION & DUAL OPERATOR MODELS

PRO 55-14



PRO 56 TON

MODEL PRO 56-14 IRONWORKER



* Shown with optional Slug Type Angle Shear

Uni-Hydro's Model PRO 56 is a true 4 station ironworker. We do not weld a notcher on our machines and charge you thousands of dollars. The industry considers a welded notcher a 4th station, NOT US! The PRO Series of Uni-Hydro are machines designed with a **Flat Bar Shear, Power Cavity, Punch Station and Notching Station.**

FEATURES:

- 6" Open Throat Punch with 56-ton Capacity
- 14" Bar Shear with 4-Sided Blade
- Safety Manual Punch Aligner
- 4-way 14" Low Rake Flat Bar Shear
- Bar Shear Hold-Down can be Fixed or Adjustable
- Magnetic Starter for Safety & Reliability
- Grease Bank
- Built for Forklift Handling
- Full Stroke Control
- Full 4th Notcher Station - Choice of Square, V- Coper or Pipe Notcher
- 1 Phase or 3 Phase Motor

SPECIFICATIONS

Model	PRO 56
Tonnage	56
Throat Depth	6"
Punch	1-1/4" hole in 1/2" mild steel 13/16" hole in 3/4" mild steel
Bar Shear	3/8" x 14", 1/2" x 10", 5/8" x 8, 3/4" x 6"
Angle Shear 90°	Slug Type - 3" x 3" x 3/8" Sever Cut - 4" x 4" x 3/8"
Miter Angle 45°	Bar Shear - 3" x 3" x 3/8" Slug Type - 2" x 2" x 5/16"
Rod Shear	Round (Max) - 1-1/16" Square (Max) - 1-1/16"
Coper Notcher 90°	For 3" x 3" x 1/4" Angle Iron
Square Notcher	Notcher Station - 2" x 3" x 3/8" Punch/Power Cavity - 1-3/4" x 2" x 1/4"

Pipe Notcher (Sch 40 or 80)	1/2", 3/4", 1", 1-1/4", 1-1/2", 1-3/4", 2"
Brake	6" or 9" x 1/4"
Channel Shear	2" & 3" combined or 4" standard
Strokes Per Min	Light Material - 50 Max Capacity - 7
Hydraulics	1,200 psi
Oil Capacity	20 quarts
Motor	Standard - 5 HP / 220v / 3ph Optional - 5 HP / 1ph
Dimensions (L x W x H)	33" x 27.25" x 57"
Weight	1,720 lbs

TOOLING AND ACCESSORIES - PAGE 18 & 19





PRO 80 TON

MODEL PRO 80-24 IRONWORKER



* Shown with optional Slug Type Angle Shear

Uni-Hydro's Model PRO 80 is a true 4 station ironworker. We do not weld a notcher on our machines and charge you thousands of dollars. The industry considers a welded notcher a 4th station, NOT US! The PRO Series of Uni-Hydro are machines designed with a **Flat Bar Shear, Power Cavity, Punch Station and Notching Station.**

FEATURES:

- Open Throat Punch with 80-ton Capacity
- 24" Bar Shear with 4-Sided Blade
- Safety Manual Punch Aligner
- 2-1/4" Stripper
- L150 and 500 Series punch & die adaptor kit that accepts up to 2-1/4" diameter punching
- Magnetic starter for safety & reliability
- Fixed or adjustable flat bar shear hold down
- Variable stroke control
- Full 4th Notcher Station - Choice of Square, V Copper or Pipe Notcher
- Grease bank for lubricating machine without removing covers
- Electric foot control
- Eyelet & forklift accommodations

SPECIFICATIONS

Model	80-24
Tonnage	80
Throat Depth	9"
Punch	1-3/8" hole in 3/4" mild steel 2-1/4" hole in 7/16" mild steel
Bar Shear	1/4" x 24", 1/2" x 20", 3/4" x 10", 1" x 6"
Angle Shear 90°	Slug Type - 6" x 6" x 1/2" Sever Cut - 4" x 4" x 3/8"
Miter Angle 45°	Slug Type - 4" x 4" x 1/2" Sever Cut - 4" x 4" x 3/8"
Rod Shear	Round (Max) - 1-1/4" Square (Max) - 1-1/4"
V Coper Notcher 90°	Notcher Station - 3" x 3" x 1/4" Punch/Power Cavity - 4" x 4" x 1/2"
Square Notcher	Notcher Station - 2" x 3" x 3/8" Punch/Power Cavity - 3" x 3" x 3/8"

Pipe Notcher (Sch 40 or 80)	1/2", 3/4", 1", 1-1/4", 1-1/2", 1-3/4", 2"
Brake	6", 9", 14", 18", 24" capacity
Channel Shear	2" & 3" combined or 4", 5" 6" standard
Strokes Per Min	Light Material - 50 Max Capacity - 9
Hydraulics	2,000 psi
Oil Capacity	16 gallons
Motor	Standard - 7.5 HP / 220v / 3ph Optional - 7.5 HP / 1ph
Dimensions (L x W x H)	46" x 37" x 70"
Weight	3,100 lbs
TOOLING AND ACCESSORIES - PAGE 18 & 19	





PRO 105 TON

MODEL PRO 105-24 IRONWORKER



* Shown with optional Universal Sever Housing

If you appreciate well-built machinery, the Uni-Hydro **Model 105-25** is the ironworker for you. This machine has been overbuilt on massive scale to handle the toughest fabrication job with ease. Competitor ironworkers are not only dwarfed by the size of "The 105", most don't even offer a true integrated 4-station design. They attempt to weld on a notcher and claim a 4th, NOT us! The PRO Series of Uni-Hydro are machines designed with a **Flat Bar Shear, Power Cavity, Punch Station and Notching Station.**

FEATURES:

- 105 Ton Open Throat Punch with Manual punch aligner
- Full 4th Notcher Station - Choice of Square, V Coper or Pipe Notcher
- 24" low-rake Bar Shear with 4-Sided Blade
- Flat Bar Shear Table
- Fixed or adjustable flat bar shear hold down
- Magnetic starter for safety & reliability
- Variable stroke control
- 2-1/4" Stripper
- L 150 and 500 Series punch & die adaptor kit that accepts up to 2-1/4" diameter punches
- Grease bank for lubricating machine without removing covers
- Electric foot control
- Eyelet & forklift accommodations

SPECIFICATIONS

Model	PRO 105-24
Tonnage	105
Throat Depth	12"
Punch	1-5/16" hole in 1" mild steel 2-1/4" hole in 7/16" mild steel
Bar Shear	1/4" x 24", 1/2" x 20", 3/4" x 12", 1" x 8"
Angle Shear 90°	Slug Type - 6" x 6" x 1/2" Sever Cut - 4" x 4" x 3/8"
Miter Angle 45°	Slug Type - 4" x 4" x 1/2" Sever Cut - 4" x 4" x 3/8"
Rod Shear	Round (Max) - 1-1/4" Square (Max) - 1-1/4"
V Coper Notcher 90°	Notcher Station - 3" x 3" x 1/4" Punch/Power Cavity - 4" x 4" x 1/2"
Square Notcher	Notcher Station - 3" x 3" x 3/8" Punch/Power Cavity - 3" x 3" x 3/8"

Pipe Notcher (Sch 40 or 80)	1/2", 3/4", 1", 1-1/4", 1-1/2", 1-3/4", 2" - Larger avail
Brake	6", 9", 14", 18", 24" capacity
Channel Shear	2" & 3" combined or 4", 5" 6" standard
Strokes Per Min	Light Material - 40 Max Capacity - 8
Hydraulics	3,000 psi
Oil Capacity	28 gallons
Motor	Standard - 7.5 HP / 220v / 3ph Optional - 7.5 HP / 1ph
Dimensions (L x W x H)	61.5" x 41" x 69.5"
Weight	4,640 lbs
TOOLING AND ACCESSORIES - PAGE 18 & 19	





PRO 125 TON

MODEL PRO 125-24 IRONWORKER



* Shown with optional Universal Sever Housing

The Uni-Hydro **Model 125-24** is another overbuilt PRO Series ironworker that incorporates a massive 3" thick center plate into its stout frame to handle the toughest fabrication job with ease. Competitor ironworkers are not only dwarfed by the size of "The 125", most don't even offer a true integrated 4-station design. They attempt to weld on a notcher and claim a 4th, NOT us! The PRO Series of Uni-Hydro are machines designed with a **Flat Bar Shear, Power Cavity, Punch Station and Notching Station.**

FEATURES:

- 125 Ton Open Throat Punch with Manual punch aligner
- Full 4th Notcher Station - Choice of Square, V Coper or Pipe Notcher
- 24" low-rake Bar Shear with 4-Sided Blade
- Flat Bar Shear Table
- Fixed or adjustable flat bar shear hold down
- Magnetic starter for safety & reliability
- Variable stroke control
- 2-1/4" Stripper
- L 150 and 500 Series punch & die adaptor kit that accepts up to 2-1/4" diameter punches
- Grease bank for lubricating machine without removing covers
- Electric foot control
- Eyelet & forklift accommodations

SPECIFICATIONS

Model	PRO 125
Tonnage	125
Throat Depth	12"
Punch	1-9/16" hole in 1" mild steel 2-1/4" hole in 9/16" mild steel
Bar Shear	1/4" x 24", 1/2" x 20", 3/4" x 14", 1" x 10"
Angle Shear 90°	Slug Type - 6" x 6" x 1/2" Sever Cut - 4" x 4" x 3/8"
Miter Angle 45°	Slug Type - 4" x 4" x 1/2" Sever Cut - 4" x 4" x 3/8"
Rod Shear	Round (Max) - 1-1/4" Square (Max) - 1-1/4"
V Coper Notcher 90°	Notcher Station - 3" x 3" x 1/4" Punch/Power Cavity - 4" x 4" x 1/2"
Square Notcher	Notcher Station - 3" x 3" x 3/8" Punch/Power Cavity - 3" x 3" x 3/8"

Pipe Notcher (Sch 40 or 80)	1/2", 3/4", 1", 1-1/4", 1-1/2", 1-3/4", 2" - Larger avail
Brake	6", 9", 14", 18", 24" capacity
Channel Shear	2" & 3" combined or 4", 5" 6" standard
Strokes Per Min	Light Material - 40 Max Capacity - 8
Hydraulics	3,000 psi
Oil Capacity	28 gallons
Motor	Standard - 7.5 HP, 220v / 3ph Optional - 7.5 HP / 1ph
Dimensions (L x W x H)	61.5" x 41" x 69.5"
Weight	4,850 lbs
TOOLING AND ACCESSORIES - PAGE 18 & 19	





PRO 135 TON

MODEL PRO 135-24 IRONWORKER



* Shown with optional Slug Type Angle Shear

Uni-Hydro takes the business of building mammoth ironworkers to a new level with the **PRO 135** and 150 ton models. These hulking machines, are constructed in the same spirit as their forbearers from the Golden Age of machine tools with weldments up to 9" thick, a foot of metal surrounding the punch and weights of almost a ton more than the PRO 125 ton.

Uni-Hydro's **PRO Series Dual Operator** models are designed with separate cylinders allowing operators to run both the punching station and the back shearing section, which includes a flat bar shear, a power cavity and a notching station.

FEATURES:

- 135-ton open throat punch
- Four different work stations can be used without retooling stations
- Manual punch aligner - Punches and dies can be aligned without lowering machine under power
- Two-stage hydraulic pump
- Two-cylinder design maximizes machine strength, safety, reliability and life
- 24" bar shear with 4-sided blades
- Magnetic starter for safety and reliability
- Fixed or adjustable bar shear hold-down
- Portable electric foot control
- Variable stroke control
- Built for forklift handling

SPECIFICATIONS

Model	PRO 135-24
Tonnage	135
Throat Depth	12" - 24"
Punch	1-11/16" hole in 1" mild steel 2-1/4" hole in 3/4" mild steel
Bar Shear	1/2" x 24", 5/8" x 20" 3/4" x 18", 1" x 12"
Angle Shear 90°	Slug Type - 6" x 6" x 1/2" Sever Cut - 6" x 6" x 3/8"
Miter Angle 45°	Slug Type - 4" x 4" x 1/2" Sever Cut - 4" x 4" x 3/8"
Rod Shear	Round (Max) - 1-1/4" Square (Max) - 1-1/4"
Coper Notcher 90°	Notcher Station - 4" x 4" x 5/16" Punch/Power Cavity - 4" x 4" x 1/2"
Square Notcher	Notcher Station - 3" x 3" x 5/16" Punch/Power Cavity - 3" x 3" x 3/8"

Pipe Notcher (Sch 40 or 80)	1/2", 3/4", 1", 1-1/4", 1-1/2", 1-3/4", 2" - Larger avail
Brake	6", 9", 14", 18", 24" capacity
Channel Shear	2", 3", 4", 5", 6", 7", 8"
Strokes Per Min	Light Material - 40 Max Capacity - 8
Hydraulics	3,000 psi
Oil Capacity	28 gallons
Motor	Standard - 7.5 HP / 220v / 3ph Optional - 7.5 HP / 1ph
Dimensions (L x W x H)	79" x 46" x 91-1/2"
Weight	7,220 lbs
TOOLING AND ACCESSORIES - PAGE 18 & 19	





PRO 150 TON

MODEL PRO 150-24 IRONWORKER



* Shown with optional Slug Type Angle Shear

In the World of Uni-Hydro's immense ironworkers the **PRO 150 ton** model stands above the rest. These ironworkers are the definition of monstrous, with a reputation for tremendous punching ability given the sheer mass of support and design. The separate punch arm can be built with a 12-24" throat and creates so much power, any fabrication job is done with ease.

Uni-Hydro's **PRO Series Dual Operator** models are designed with separate cylinders allowing operators to run both the punching station and the back shearing section, which includes a flat bar shear, a power cavity and a notching station.

FEATURES:

- 150-ton open throat punch
- Four different work stations can be used without retooling stations
- Manual punch aligner - Punches and dies can be aligned without lowering machine under power
- Two-stage hydraulic pump
- Two-cylinder design maximizes machine strength, safety, reliability and life
- 24" bar shear with 4-sided blades
- Magnetic starter for safety and reliability
- Fixed or adjustable bar shear hold-down
- Portable electric foot control
- Variable stroke control
- Built for forklift handling

SPECIFICATIONS

Model	PRO 150-24
Tonnage	150
Throat Depth	12" - 24"
Punch	1-7/8" hole in 1" mild steel 2-1/4" hole in 13/16" mild steel
Bar Shear	1/2" x 24" , 5/8" x 20" 3/4" x 18", 1" x 14"
Angle Shear 90°	Slug Type - 6" x 6" x 1/2" Sever Cut - 6" x 6" x 3/8"
Miter Angle 45°	Slug Type - 4" x 4" x 1/2" Sever Cut - 4" x 4" x 3/8"
Rod Shear	Round (Max) - 1-1/2" Square (Max) - 1-1/2"
Coper Notcher 90°	Notcher Station - 4" x 4" x 5/16" Punch/Power Cavity - 4" x 4" x 1/2"
Square Notcher	Notcher Station - 3" x 3" x 5/16" Punch/Power Cavity - 3" x 3" x 3/8"

Pipe Notcher (Sch 40 or 80)	1/2", 3/4", 1", 1-1/4", 1-1/2", 1-3/4", 2" - Larger avail
Brake	6", 9", 14", 18", 24" capacity
Channel Shear	2", 3", 4", 5", 6", 7", 8"
Strokes Per Min	Light Material - 40 Max Capacity - 8
Hydraulics	3,000 psi
Oil Capacity	28 gallons
Motor	Standard - 7.5 HP / 220v / 3ph Optional - 7.5 HP / 1PH
Dimensions (L x W x H)	79" x 46" x 91-1/2"
Weight	8,000 lbs
TOOLING AND ACCESSORIES - PAGE 18 & 19	



Outfit your Ironworker for maximum productivity with these exceptional tooling choices, optimized for the Power Cavity, Punch and Notching Stations.



SLUG TYPE ANGLE SHEAR



UNIVERSAL SEVER HOUSING FRONT



UNIVERSAL SEVER HOUSING BACK



UNIVERSAL SEVER HOUSING



SPEING RETURN BRAKE



2-PART BRAKE



PIPE NOTCHER



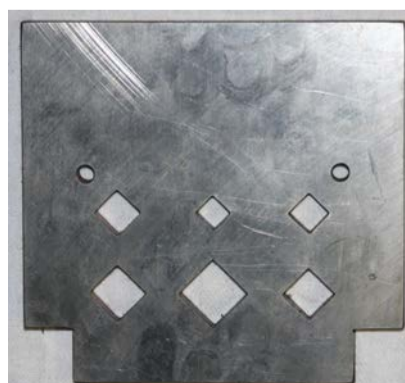
SQUARE NOTCHER



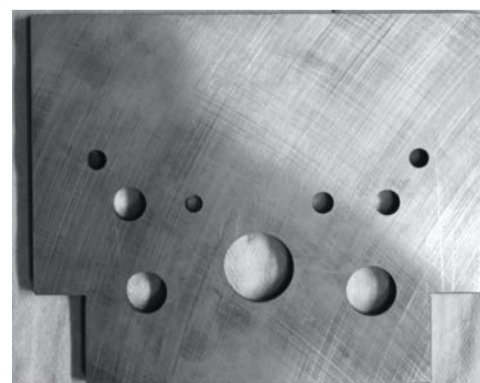
V-COPER NOTCHER



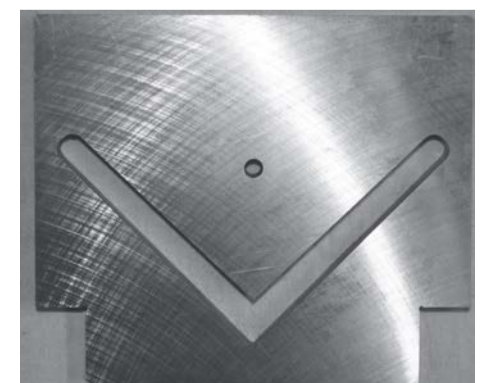
CHANNEL SEVER PLATE



ROD SEVER PLATE



BAR SEVER PLATE

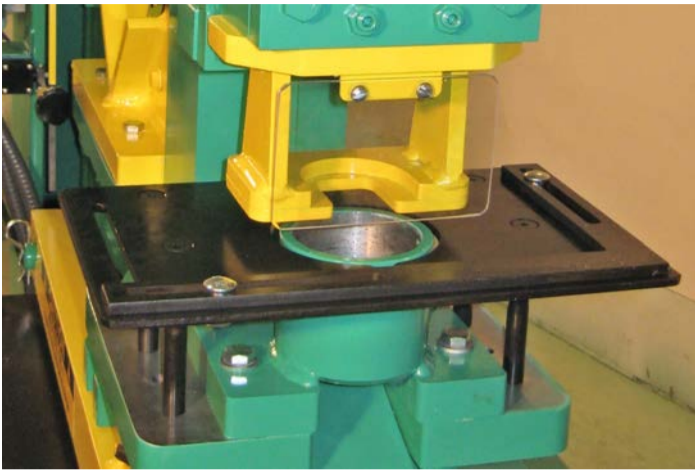


ANGLE SEVER PLATE



ACCESSORIES

OPTIMIZED FOR PRODUCTIVITY



PUNCH TABLE WITH ADJUSTABLE JIG



BAR SHEAR TABLE



STEEL BIN CATCHER



PUNCH & DIE RACK



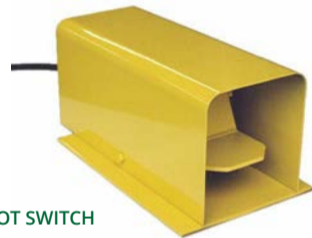
PUNCH NUT WRENCHES



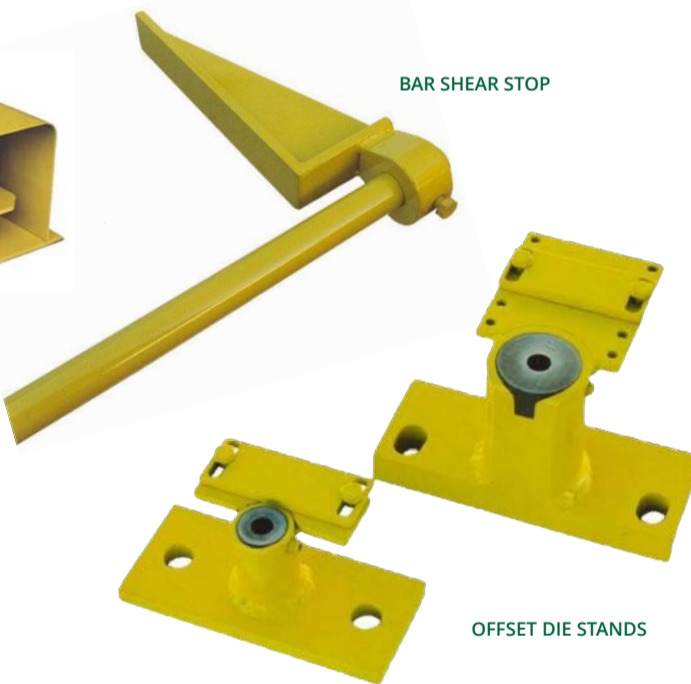
OVERSIZE DIE STANDS



DELUXE BACK GAUGE

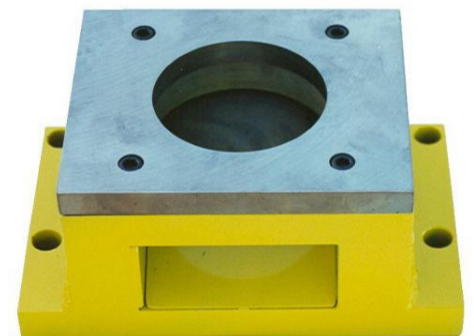


REMOTE FOOT SWITCH

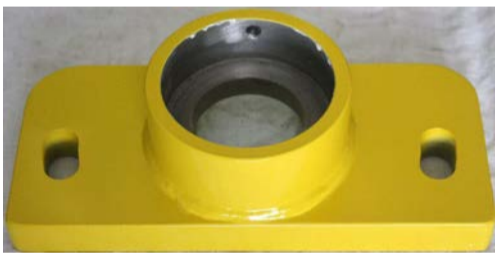


BAR SHEAR STOP

OFFSET DIE STANDS



SPECIAL DIE STAND WITH 7x7 PLATE DIE



OVERSIZE DIE STAND



OVERSIZE DIE SETS



GREASE BANK



OFFSET DIE STANDS





MODEL

3851 

HYDRAULIC PLATE SHEAR



PLATE SHEARS

BUILT IN COSMOS, MN 

CAUTION
MILD STEEL ONLY
DO NOT CUT STEEL WITH BAR HOLDER OFF

HYDRAULIC PLATE SHEARS



MODEL 2551

1/4" X 51" HYDRAULIC PLATE SHEAR



The Uni-Hydro Model 2551 Plate Shear is a compact powerhouse that provides our customers with decades of trouble free metal cutting operation. This plate shear is engineered to deliver increasing power throughout the cut with a patented system that utilizes a cylinder that is center mounted on the blade and uses pivot arms to transfer energy to three pressure points. The result is up to a 115% performance gain as the cut finishes. No other competitors shear matches this performance!

Another hallmark of these plate shears of the simplicity of adjustments, a fixed low rake design, quiet hydraulic operation and simple measuring systems for operator productivity.

SPECIFICATIONS

Model 2551

Metal Shear Capacity 1/4" x 51"

Strokes Per Minute (max) 16

Blade Size 3/4" x 4" x 51"

Blade Cutting Edges 4

Blade Rake 1-1/4" over 51"

Motor 7 1/2 HP, 3ph or 7 1/2 HP, 1ph

Hydraulic System Pump 1200 psi

Oil Capacity 10 gallons

Dimensions 80" W x 26" D x 72" H

Deck Height 32"

Weight 4,480 lbs

FEATURES

- Single cylinder design
- Cylinder is center mounted on the blade and uses pivot arms to transfer energy to three pressure points
- Independent hydraulic hold-down
- 36" Front operated manual back gauge, 24" squaring arm
- Excellent visibility of cut
- Electric Controls including foot switch
- Even distribution of energy across the blade avoids "flexing" of the blade
- No adjustment of blade gap when switching from thin to thick material
- Fixed Low Rake Blade
- Built for forklift handling or lifting with overhead eyelet's





MODEL 2574

1/4" X 71" HYDRAULIC PLATE SHEAR



The Uni-Hydro Model 2574 Plate Shear is a compact powerhouse that provides our customers with decades of trouble free metal cutting operation. This plate shear is engineered to deliver increasing power throughout the cut with a patented system that utilizes a cylinder that is center mounted on the blade and uses pivot arms to transfer energy to three pressure points. The result is up to a 115% performance gain as the cut finishes. No other competitors shear matches this performance!

Another hallmark of these plate shears of the simplicity of adjustments, a fixed low rake design, quiet hydraulic operation and simple measuring systems for operator productivity.

SPECIFICATIONS

Model 2574

Metal Shear Capacity 1/4" x 74"

Strokes Per Minute (max) 14

Blade Size 3/4" x 4" x 74"

Blade Cutting Edges 4

Blade Rake 1-3/16" over 74"

Motor 7 1/2 HP, 3ph or 7 1/2 HP, 1ph

Hydraulic System Pump 1000 psi

Oil Capacity 10 gallons

Dimensions 107" W x 28" D x 72" H

Deck Height 32"

Weight 6,050 lbs

FEATURES

- Single cylinder design
- Cylinder is center mounted on the blade and uses pivot arms to transfer energy to three pressure points
- Independent hydraulic hold-down
- 36" Front operated manual back gauge, 24" squaring arm
- Excellent visibility of cut
- Electric Controls including foot switch
- Even distribution of energy across the blade avoids "flexing" of the blade
- No adjustment of blade gap when switching from thin to thick material
- Fixed Low Rake Blade
- Built for forklift handling or lifting with overhead eyelet's





MODEL 3851

3/8" X 51" HYDRAULIC PLATE SHEAR



The Uni-Hydro Model 3851 Plate Shear is a compact powerhouse that provides our customers with decades of trouble free metal cutting operation. This plate shear is engineered to deliver increasing power throughout the cut with a patented system that utilizes a cylinder that is center mounted on the blade and uses pivot arms to transfer energy to three pressure points. The result is up to a 115% performance gain as the cut finishes. No other competitors shear matches this performance!

Another hallmark of these plate shears of the simplicity of adjustments, a fixed low rake design, quiet hydraulic operation and simple measuring systems for operator productivity.

SPECIFICATIONS

Model 3851

Metal Shear Capacity 3/8" x 51"

Strokes Per Minute (max) 15

Blade Size 3/4" x 4" x 51"

Blade Cutting Edges 4

Blade Rake 1-34" over 51"

Motor 7 1/2 HP, 3ph or 10 HP, 1ph

Hydraulic System Pump 1700 psi

Oil Capacity 10 gallons

Dimensions 80" W x 26" D x 72" H

Deck Height 32"

Weight 4,650 lbs

FEATURES

- Single cylinder design
- Cylinder is center mounted on the blade and uses pivot arms to transfer energy to three pressure points
- Independent hydraulic hold-down
- 36" Front operated manual back gauge, 24" squaring arm
- Excellent visibility of cut
- Electric Controls including foot switch
- Even distribution of energy across the blade avoids "flexing" of the blade
- No adjustment of blade gap when switching from thin to thick material
- Fixed Low Rake Blade
- Built for forklift handling or lifting with overhead eyelet's





MODEL 3896

3/8" X 96" HYDRAULIC PLATE SHEAR



The Uni-Hydro **Model 3896** Plate Shear is a compact powerhouse that provides our customers with decades of trouble free metal cutting operation. This plate shear is engineered to deliver increasing power throughout the cut with a patented system that utilizes a cylinder that is center mounted on the blade and uses pivot arms to transfer energy to three pressure points. The result is up to a 115% performance gain as the cut finishes. No other competitors shear matches this performance!

Another hallmark of these plate shears of the simplicity of adjustments, a fixed low rake design, quiet hydraulic operation and simple measuring systems for operator productivity.

SPECIFICATIONS

Model 3896

Metal Shear Capacity 3/8" x 96"

Strokes Per Minute (max) 12

Blade Size 1" x 4" x 100"

Blade Cutting Edges 4

Blade Rake 2-1/2" over 96"

Motor 7 1/2 HP, 3ph or 10 HP, 1ph

Hydraulic System Pump 1400 psi

Oil Capacity 10 gallons

Dimensions 80" W x 26" D x 72" H

Deck Height 32"

Weight 4,480 lbs

FEATURES

- Single cylinder design
- Cylinder is center mounted on the blade and uses pivot arms to transfer energy to three pressure points
- Independent hydraulic hold-down
- 36" Front operated manual back gauge, 24" squaring arm
- Excellent visibility of cut
- Electric Controls including foot switch
- Even distribution of energy across the blade avoids "flexing" of the blade
- No adjustment of blade gap when switching from thin to thick material
- Fixed Low Rake Blade
- Built for forklift handling or lifting with overhead eyelet's





FEATURES

HYDRAULIC PLATE SHEAR SERIES

Uni-Hydro Plate Shears are time tested performers equipped with many features to help operators quickly and effectively perform shearing jobs.



SHEAR BLADE SIGHT LINES



BACK GAUGE ADJUSTMENT WHEEL



BACK GAUGE COUNTER



BACK GAUGE SIDE VIEW



BACK GAUGE STOP



24" FRONT GAUGE ON SQUARING ARM



LEFT BLADE GAP ADJUST



BACK GAUGE FULL VIEW



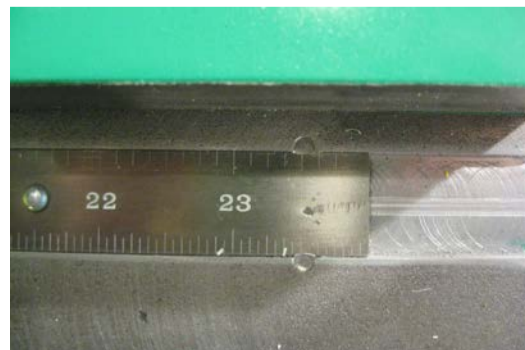
BLADE GAP MICRO ADJUSTMENTS ALL DOWN THE BLADE



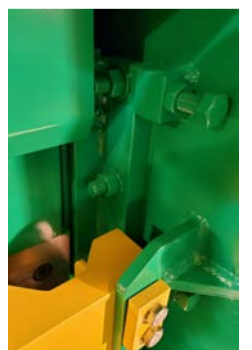
BACK GAUGE LINKAGE



BACK GAUGE LINKAGE



INSET 24" FRONT GAUGE RULER



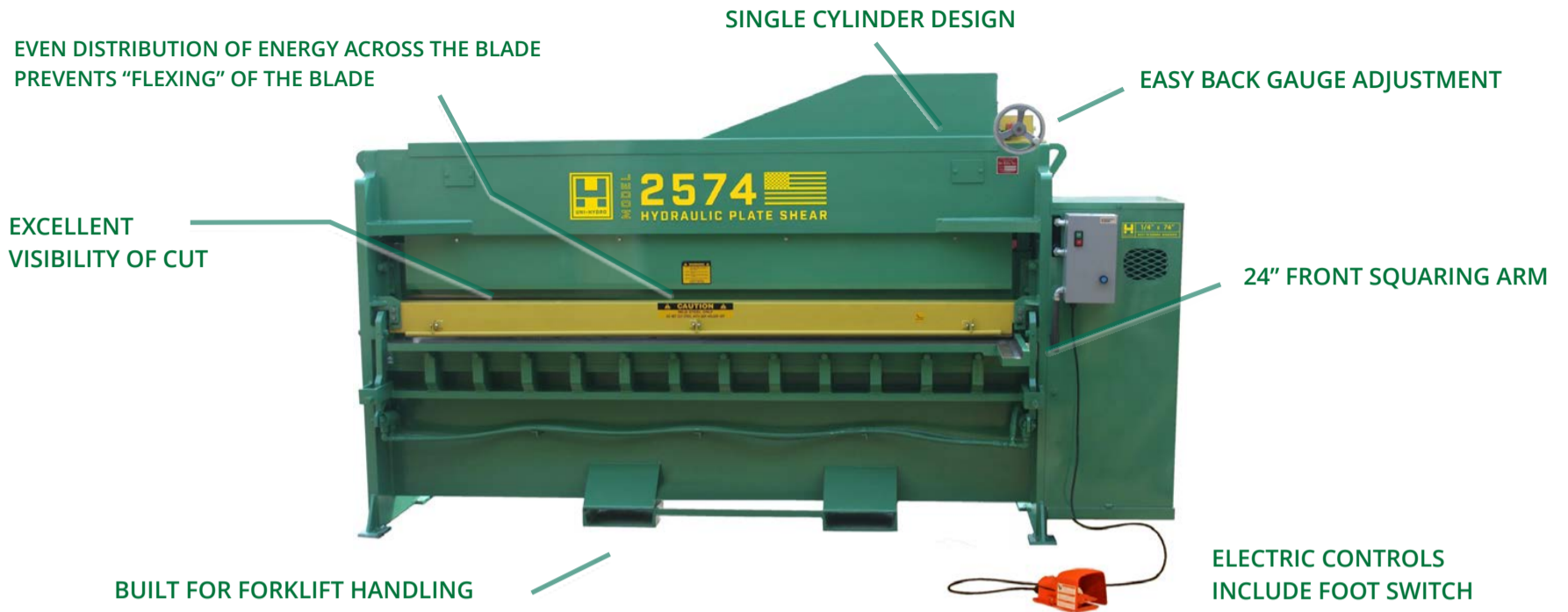
RIGHT BLADE GAP ADJUST





MODEL MATRIX

HYDRAULIC PLATE SHEAR SERIES



Model	2551	2574	3851	3896
Metal Shear Capacity	1/4" x 51"	1/4" x 74"	3/8" x 51"	3/8" x 96"
Strokes Per Minute (max)	16	14	15	12
Blade (4 cutting edges)	3/4" x 4" x 51"	3/4" x 4" x 74"	3/4" x 4" x 51"	1" x 4" x 100"
Blade Rake	1 1/4" over 51"	1 3/16" over 74"	1 3/4" over 51"	2 1/2" over 96"
Motor	7 1/2 HP / 3ph 7 1/2 HP / 1ph	7 1/2 HP / 3ph 7 1/2 HP / 1ph	7 1/2 HP / 3ph 10 HP / 1ph	7 1/2 HP / 3ph 10 HP / 1ph
Hydraulic System Pump	1200 psi	1000 psi	1700 psi	1400 psi
Oil Capacity	10 gallons	10 gallons	10 gallons	15.5 gallons
Dimensions				
Length	80"	107"	80"	132"
Width	26"	28"	26"	47"
Deck Height	32"	32"	32"	31 3/4"
Overall Height	72"	72"	72"	74"
Weight	4480 lbs	6050 lbs	4650 lbs	10840 lbs





IRONWORKER

PUNCH TONNAGE CHART

HOLE DIAMETER	3/16"	5/16"	7/16"	1/2"	9/16"	5/8"	11/16"	3/4"	13/16"	7/8"	15/16"	1"	1-1/8"	1-1/4"	1-1/2"
THICKNESS	PRESSURE IN TONS														
18 GA	0.5	0.7	1.6	1.9	2.1	2.4	2.6	2.8	3.1	3.3	3.5	3.8	4	4.2	5.6
16 GA	0.6	0.9	2.1	2.3	2.6	2.9	3.2	3.5	3.8	4.1	4.4	4.7	4.8	6	7
14 GA	0.7	1.2	2.6	2.9	3.3	3.7	4	4.4	4.8	5.1	5.5	5.9	5	7.2	10
12 GA	1	1.5	3.6	4.1	4.6	5.1	5.7	6.2	6.7	7.2	7.7	8.2	7	10	12
10 GA	1.3	2	4.6	5.3	5.9	6.6	7.3	7.9	8.6	9.2	9.9	10.6	10	13	15
5/32"	-	2.3	5.4	6.1	6.9	7.7	8.4	9.2	10	10.7	11.5	12.3	11	16	19
3/16"	-	2.8	6.4	7.4	8.3	9.2	10.1	11	12	12.9	13.8	14.8	17	19	23
1/4"	-	-	8.6	9.8	11.1	12.3	13.5	14.7	16	17.2	18.4	19.7	23	25	30
3/8"	-	-	12.8	14.8	16.5	18.5	20.2	22.1	23.8	25.8	27.5	29.5	33	38	45
1/2"	-	-	-	19.7	22	24.6	26.9	29.5	31.8	34.4	36.8	39.4	45	50	60
5/8"	-	-	-	-	-	30.8	33.7	36.9	39.9	43	46	49.2	56	63	75
3/4"	-	-	-	-	-	-	-	44.3	47.7	51.7	55.2	59	68	75	90
1"	-	-	-	-	-	-	-	-	-	-	-	80	90	100	120

OVER 20,000 PUNCH & DIE SETS IN STOCK!

CALL TODAY!

UNI-HYDRO INC. - 310 EAST GEMINI AVE. COSMOS, MN 56228. USA

(800) 328-0036



UNI-HYDRO™

BUILT IN COSMOS, MN 

FOR MORE INFORMATION VISIT

WWW.UNIHYDRO.COM

(800) 328-0036

